

Growth and Change

Supporting student achievement and
planning for enrollment growth

Community Engagement Forums, April – May 2017



Greetings and introductions

- Dr. Joyce Stewart, Deputy Superintendent
- Mike Gunn, Executive Director of Facilities & Operations





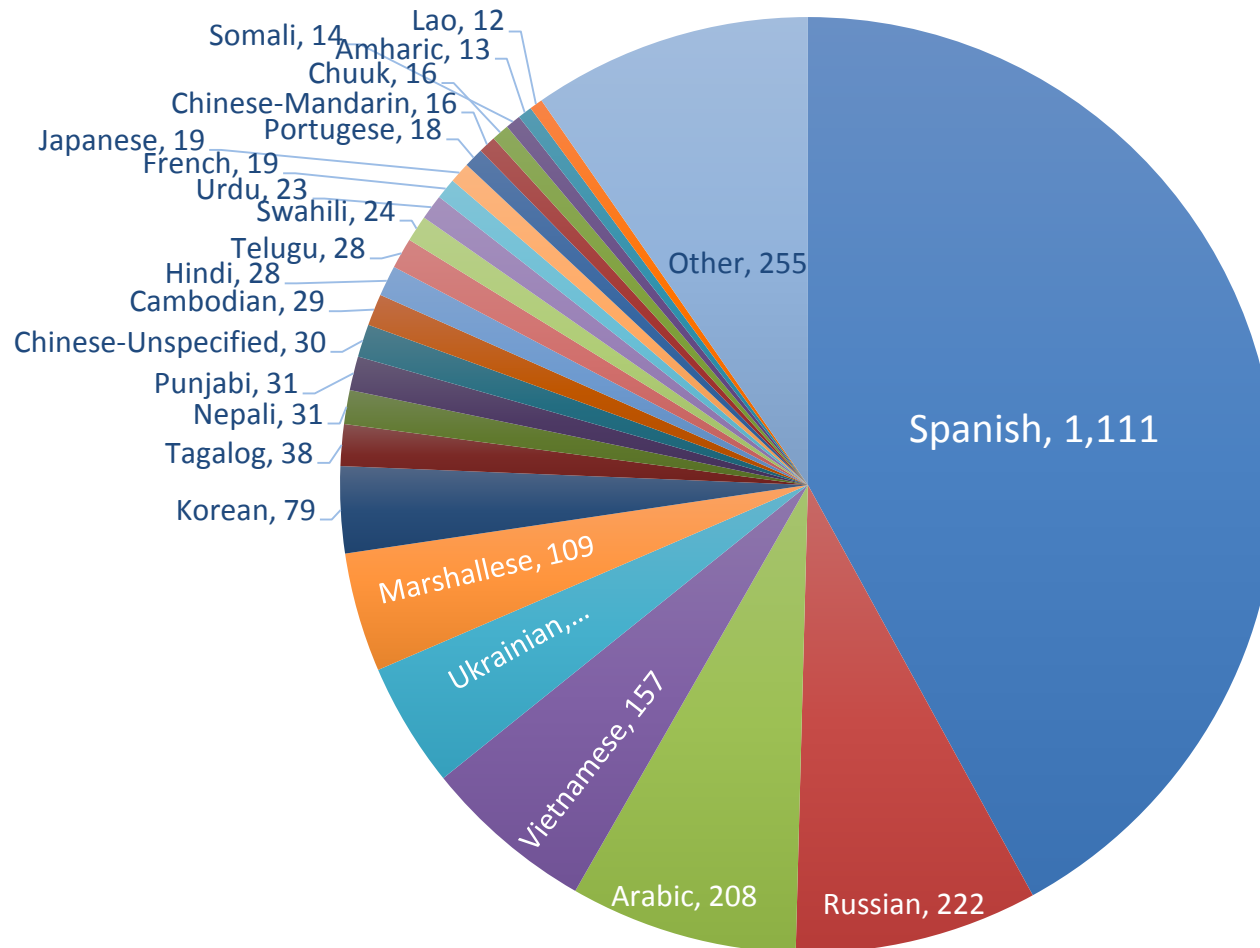
Tonight we will discuss

- We are **growing** and **changing**.
- We are **achieving**.
- We are planning for continued **growth** and **classroom needs**.
- We need **your input**





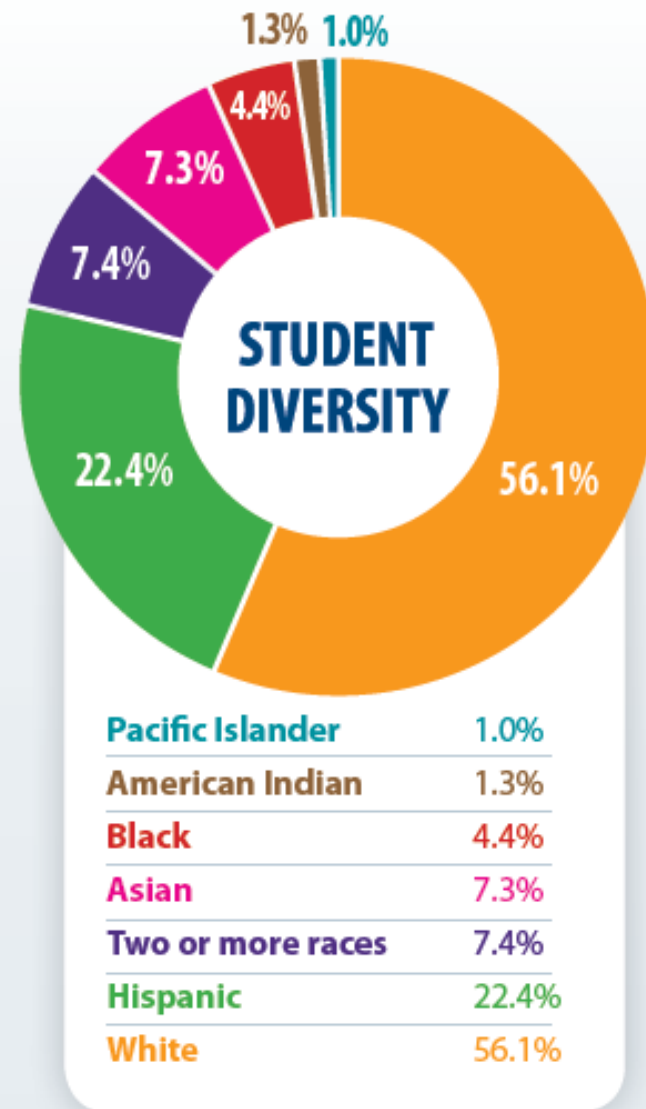
Students speak 91 languages



Growing and Changing



**Increasingly
diverse
population**





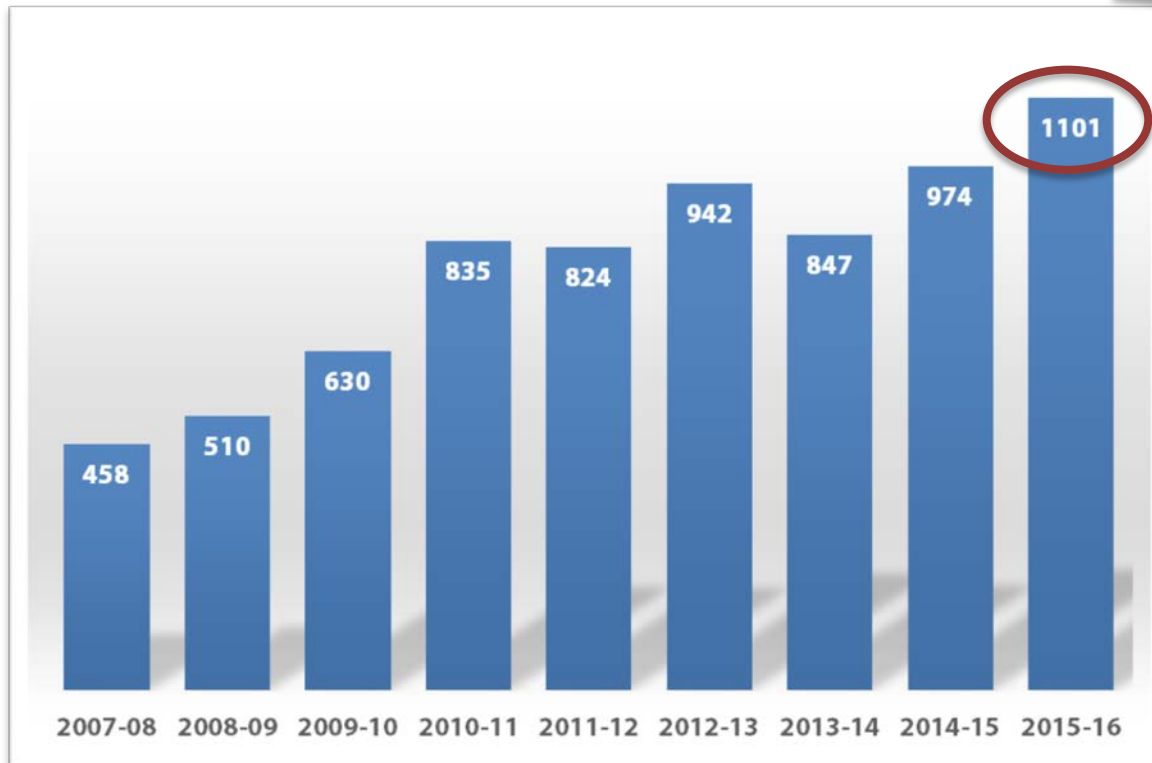
Four of every 10 students who attend Everett Public Schools live in poverty



Growing and Changing



Growing number of homeless students



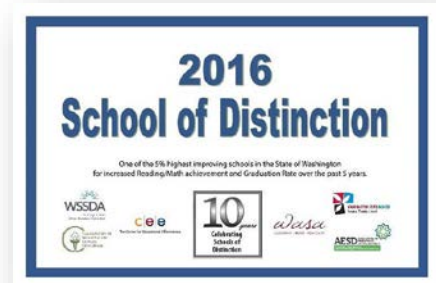
Everett Public Schools has highest number of homeless students in the county!

Distinguished Performance



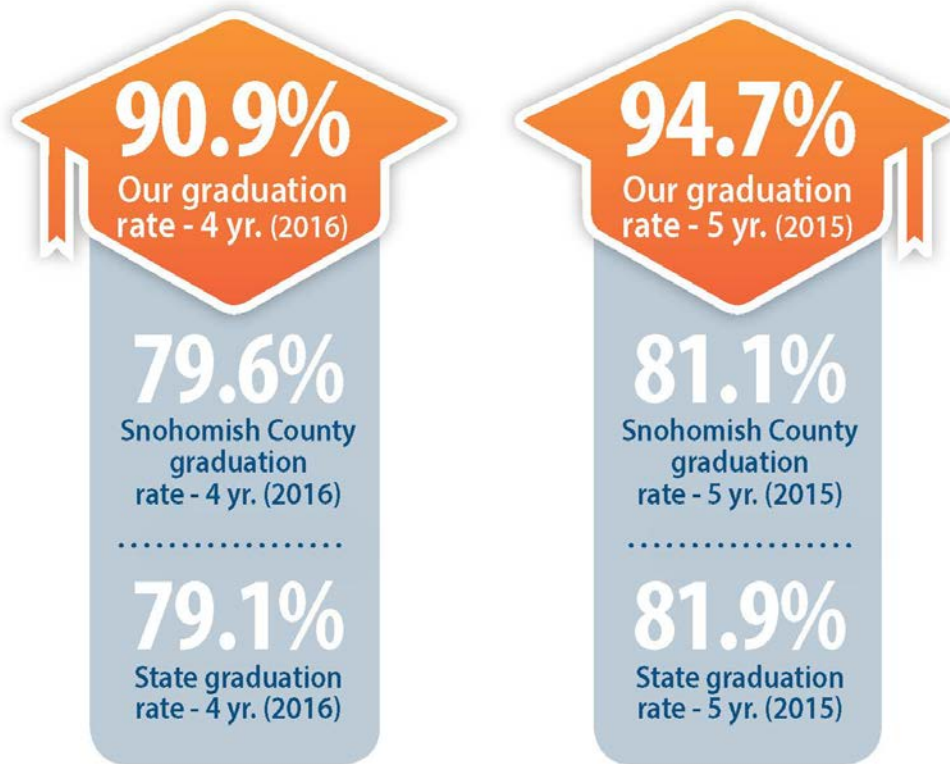
Everett Public Schools has earned 100 awards since 2005!

- Districts of Distinction honoree, year 2
- Equal Opportunity Schools honoree
- Washington Achievement Awards 2016: Cedar Wood, Forest View, Garfield, Jefferson, Mill Creek and Gateway
- School of Distinction Award 2016: Garfield, Whittier and Sequoia
- Title I, Part A Award 2016: Lowell
- Board of Distinction: 2014 and 2016
- Superintendent of the Year 2017



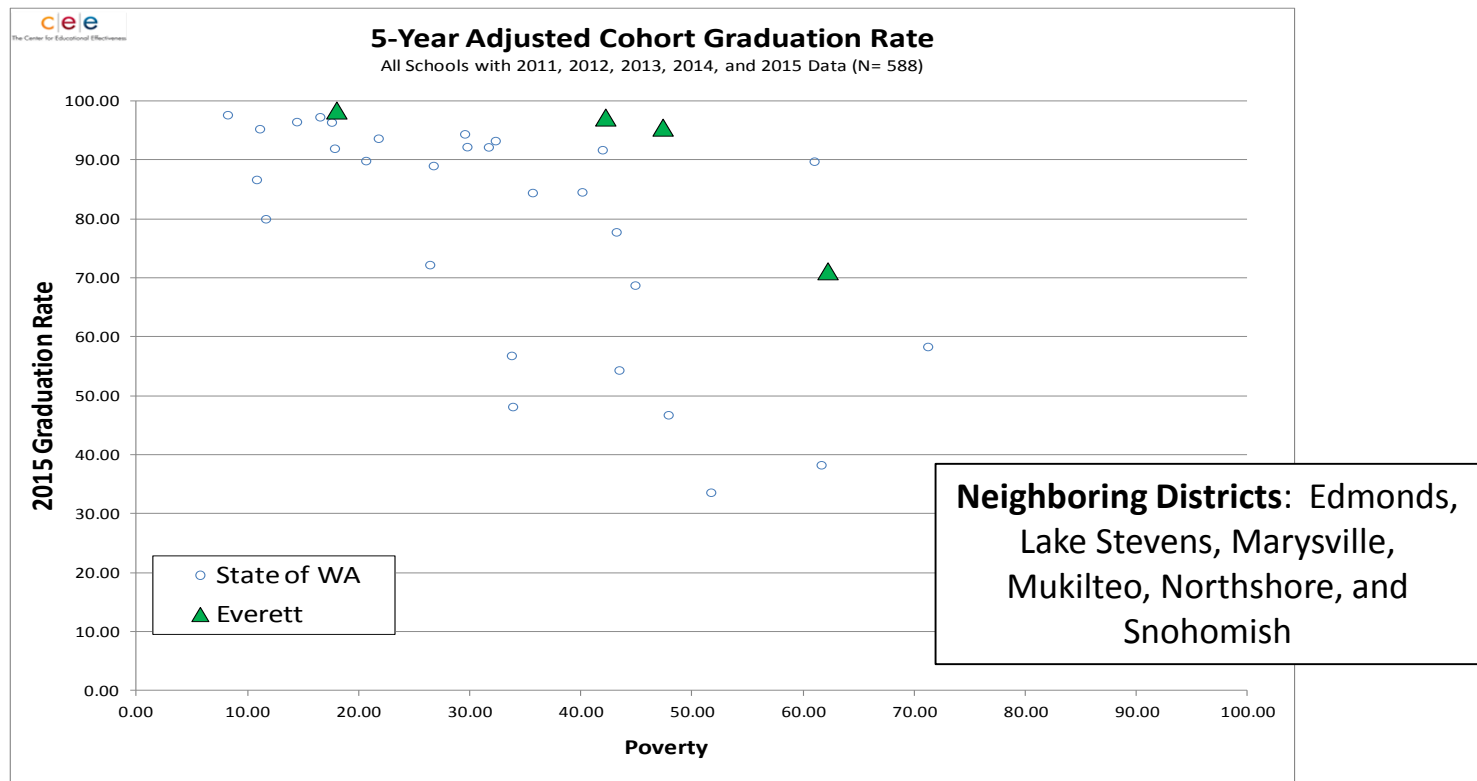


Graduation rates continue to climb





Graduation rates and scores continue to climb





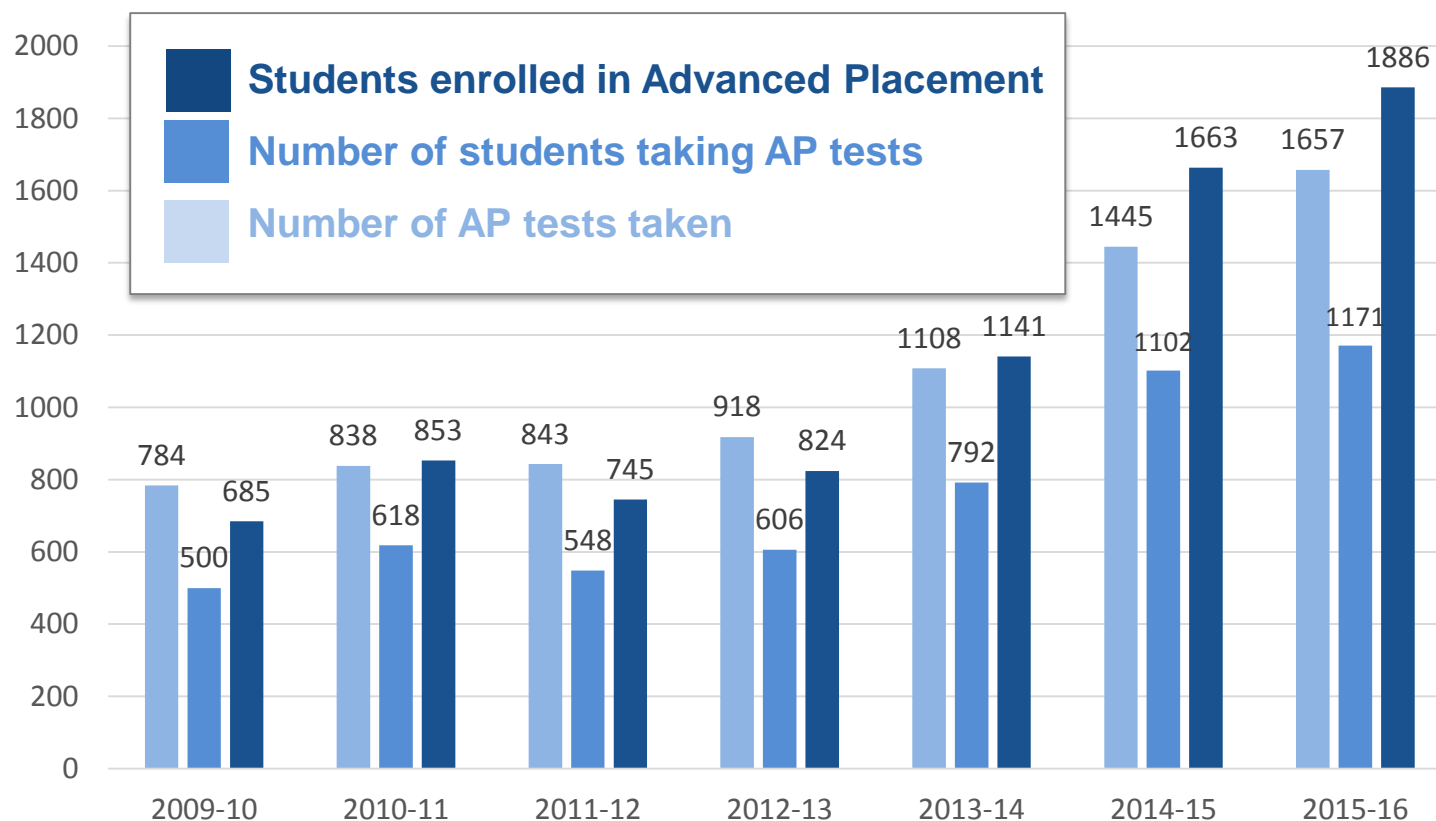
Results from Smarter Balanced 2016 assessments continue to surpass states

	ELA	Math	Science
Grade 3	+7.0	+4.8	
Grade 4	+9.9	+9.7	
Grade 5	+12.4	+8.8	+10.9
Grade 6	+13.8	+5.2	
Grade 7	+16.2	+6.6	
Grade 8	+15.1	+6.6	+13.0
Grade 11	+6.9	+15.8	+5.7



More students in challenging courses

- Advanced Placement





More students in challenging courses

- College in the High School, Tech Prep, Running Start

College in the High School

2016	
Students	Classes
2,733	7,550
2015	
Students	Classes
2,612	8,784
2012	
Students	Classes
2,048	6,128



Key Strategies for Student Support



- High quality staff
- Effective professional development
- Collaborative environment
- Rigorous and standards-based instructional materials
- High expectations and personalized high support

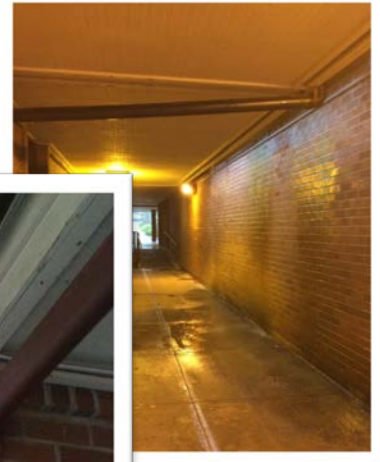


2016 Bond and Levy Projects

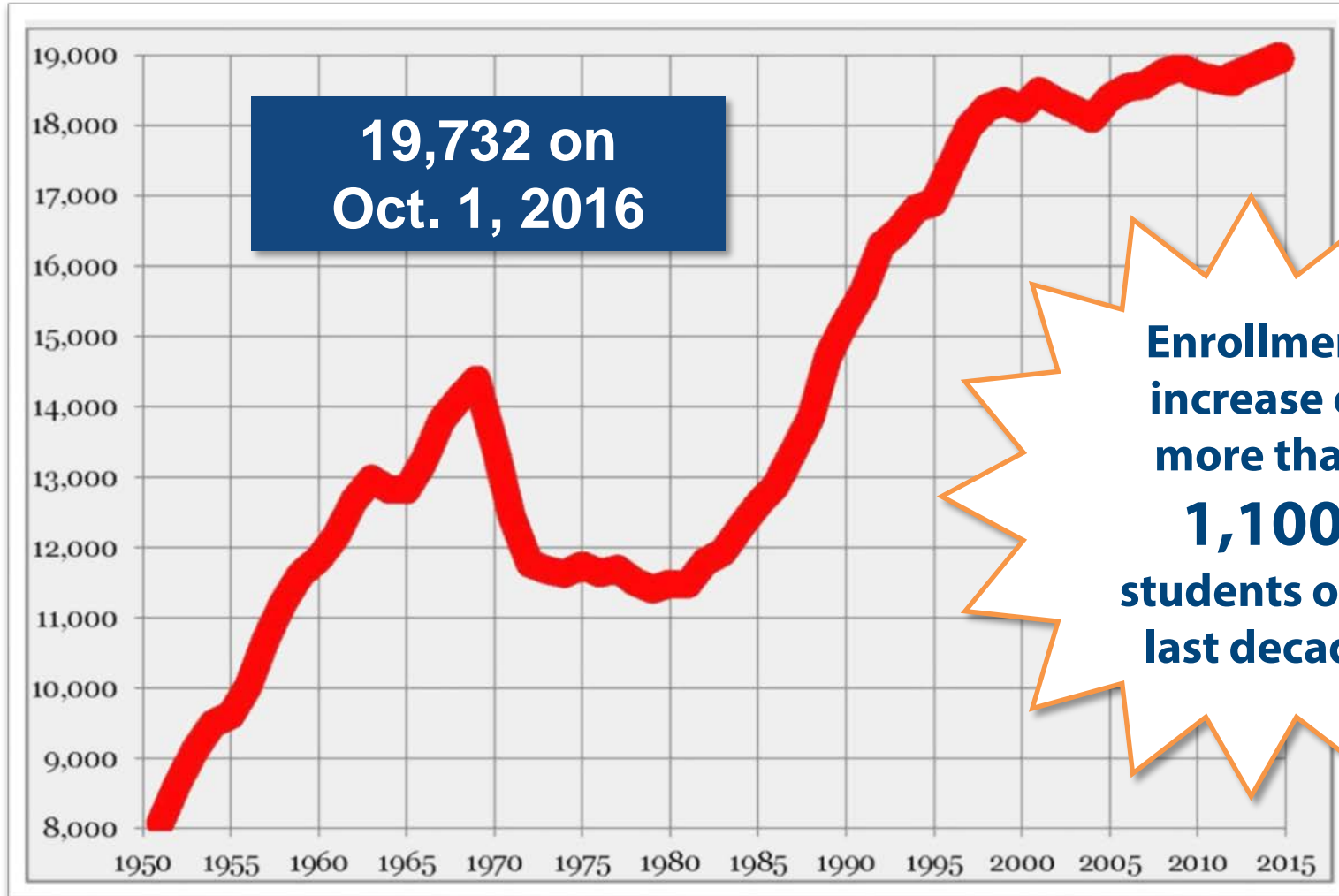


Addresses immediate facility needs

- New elementary school
- Remodel North and Woodside
- Critical repairs to many schools
- Technology and infrastructure
- Safety improvements



We're Growing!



Growing and Changing



Fastest growing district in Snohomish County

1,600 more students expected in 10 years



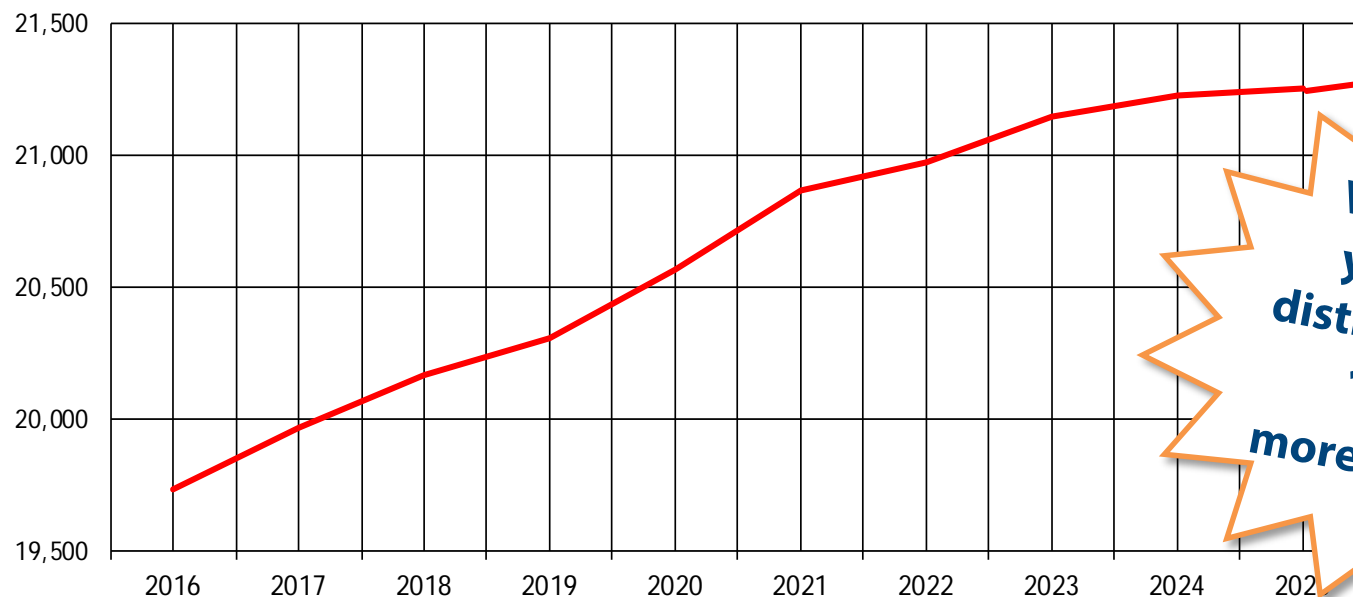
26 SCHOOLS

106 PORTABLES

Enrollment Outlook



2016-2026



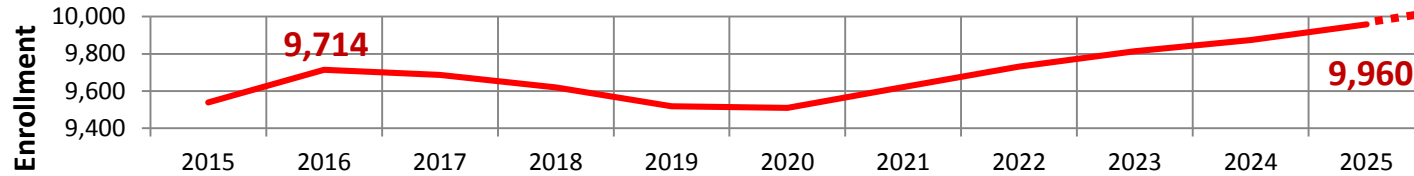
**Within 10
years, the
district expects
1,600
more students!**

Projection	2016	2017	2018	2019	2020	2021	2022	2023	2024	2025	2026
District-wide	19,732 Actual	19,965	20,167	20,309	20,567	20,865	20,976	21,145	21,229	21,254	21,406

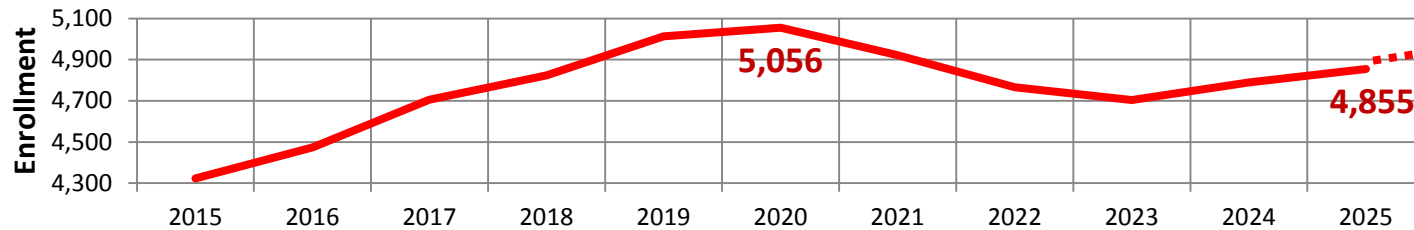
Enrollment Outlook



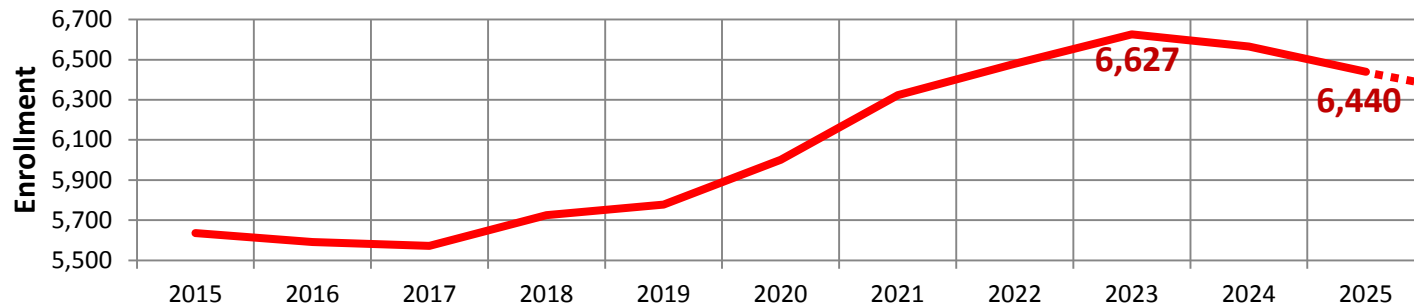
EPS Elementary School Projections



EPS Middle School Enrollment Projections



EPS High School Enrollment Projections





Changes expected between 2016 and 2026



Level	Projected changes
Elementary Schools	<ul style="list-style-type: none">• 13 of 18 schools will be over permanent building capacity• 81 portable classrooms will be needed
Middle Schools	<ul style="list-style-type: none">• 3 of 5 schools continue to be over permanent building capacity• 26 portable classrooms will be needed
High Schools	<ul style="list-style-type: none">• 2 of 3 comprehensive high schools will be over permanent building capacity• 38 portable classrooms will be needed (30 at JHS, 8 at CHS)



The “big” story

- Each of our high schools started out smaller and grew into their current size
- CHS was built when EHS enrollment reached 2,353
- JHS was built when CHS enrollment reached 2,328
- By 2023, JHS enrollment is projected to reach 2,462

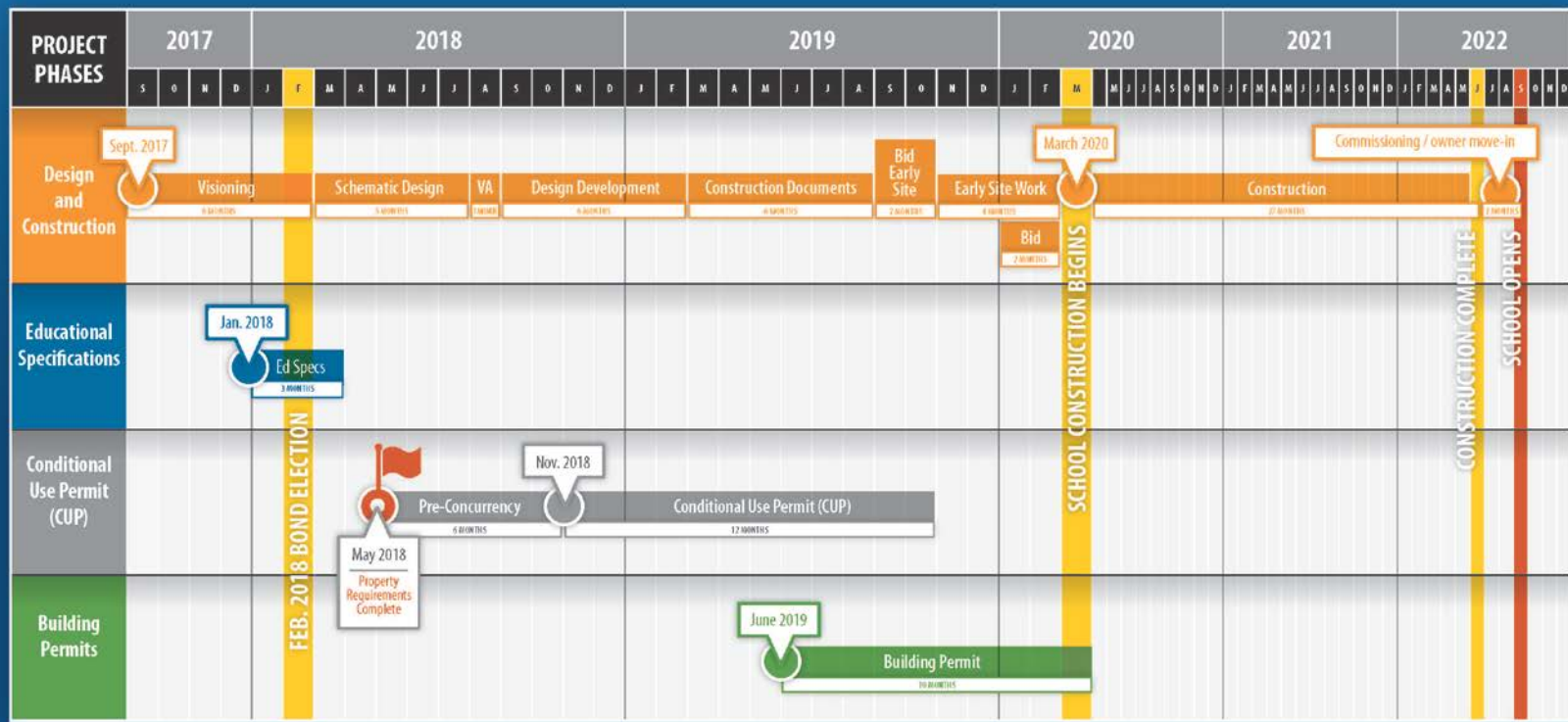
The “big” question: When should we build our next high school?



New High School



New Comprehensive High School #4 – Preliminary Design and Construction Schedule September 2017 – September 2022





What have some other districts done?

Double shifting

- School operates in two shifts, with one group of students in the building early in the day and a second group of students later in the day.

Staggered shift or 9 period day

- School start begins in staggered pattern, where students begin and end at different times of the day to reduce total number in the school at one time.

Year round school

- 45-15 plan, in which students attend school for 45 days then have 15 days off or the 60-20 and 90-30 calendars, where students are in class for 60 or 90 days with vacations of 20 or 30 days respectively.

Preliminary Cost Estimates



New Construction

- New comprehensive high school no. 4 \$185m
- New elementary school no. 19 \$68m
- New permanent classrooms for K-3 class size reductions (36 classrooms) \$36m
- Early learning center – regional facility \$24m
- South end bus facility (includes property) \$5m

Note: Estimated costs on this page are escalated to the assumed mid-point of construction, which is 2021 for the new comprehensive high school no. 4 and 2022 for all other projects.

Preliminary Cost Estimates



Modernizations/Replacements

- Everett HS cafeteria modernization \$21m
- Everett HS vocational building modernization \$12m
(STEM - allied health and nursing pathway)
- Everett HS science building modernization \$7m
- Cascade HS science building modernization \$16m
(STEM - advanced manufacturing & aerospace)
- Cascade HS gymnasium modernization \$39m
- Cascade HS cafeteria remodel \$4m
- Madison ES new-in-lieu modernization \$55m
- Jackson ES new-in-lieu modernization \$45m
- Lowell ES new-in-lieu modernization \$55m

Note: Estimated costs on this page are escalated to 2022, which is the assumed mid-point of construction.

Preliminary Cost Estimates



Site Improvements

- | | |
|---|-------|
| • Jefferson ES Parking Lot Expansion and ADA Ramps | \$1m |
| • Cascade HS Softball Field Drainage and Dugouts | \$2m |
| • Additional Synthetic Fields at Cascade and Jackson high schools (with lights) | \$7m |
| • Synthetic Tracks & Fields at 5 Middle Schools | \$13m |
| • Elementary Field Upgrades at (3) Schools | \$3m |
| • Memorial Baseball Field Improvements | \$2m |

Note: Estimated costs on this page are escalated to 2022, which is the assumed mid-point of construction

Preliminary Cost Estimates



HVAC Upgrades

- Jackson HS HVAC upgrades \$10m
- HVAC upgrades at Evergreen, Gateway
Heatherwood (replace Victaulic joints) \$13m
- HVAC controls upgrades at 7 sites \$3m
- HVAC unit upgrades at 12 portables \$1m

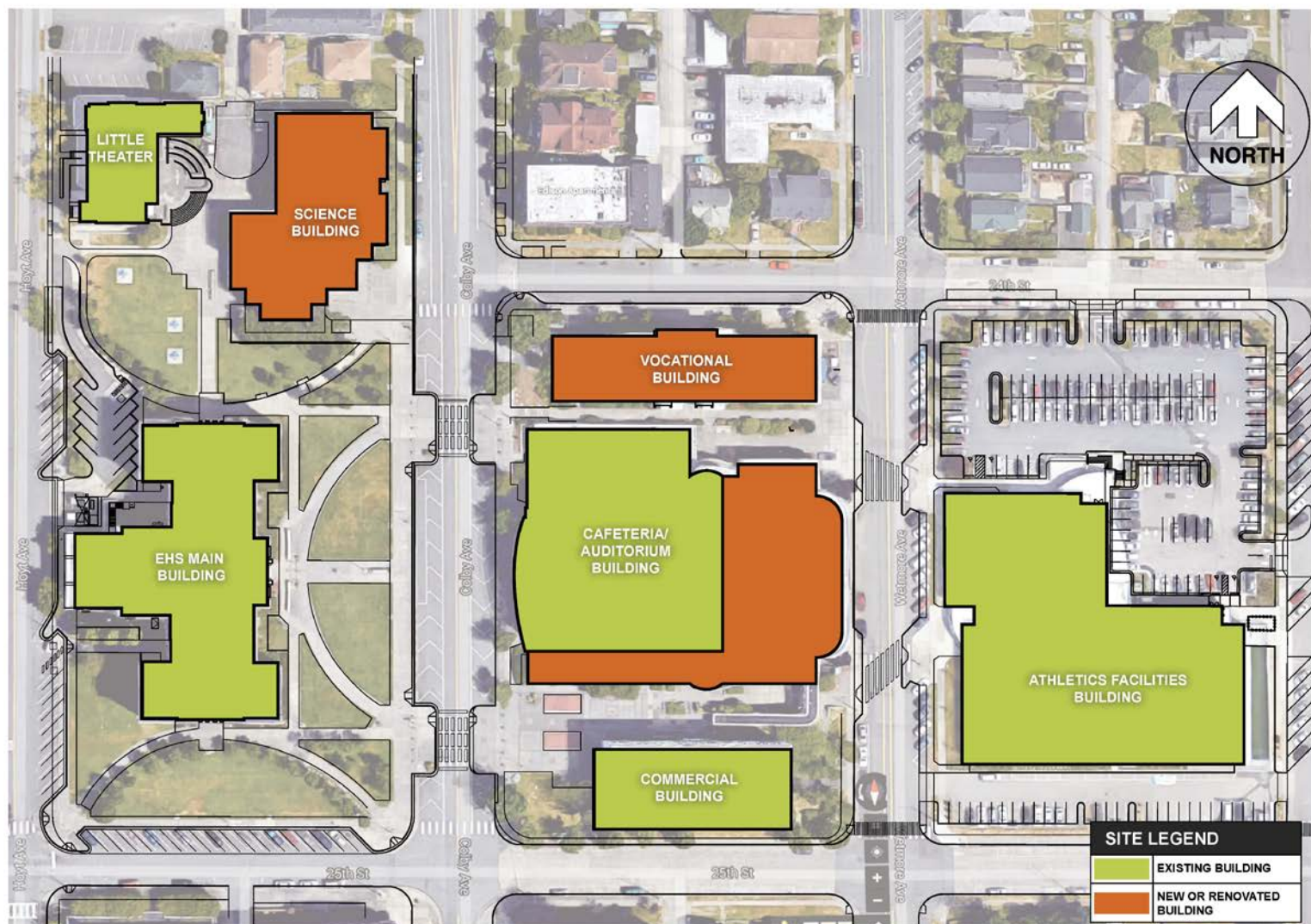
Technology

- Infrastructure, equipment, software
hardware, training and support \$16m

Note: Estimated HVAC costs on this page are escalated to 2022, which is the assumed mid-point of construction.

Preliminary Site Plans

EHS Cafeteria and Vocational Buildings



DYKEMAN

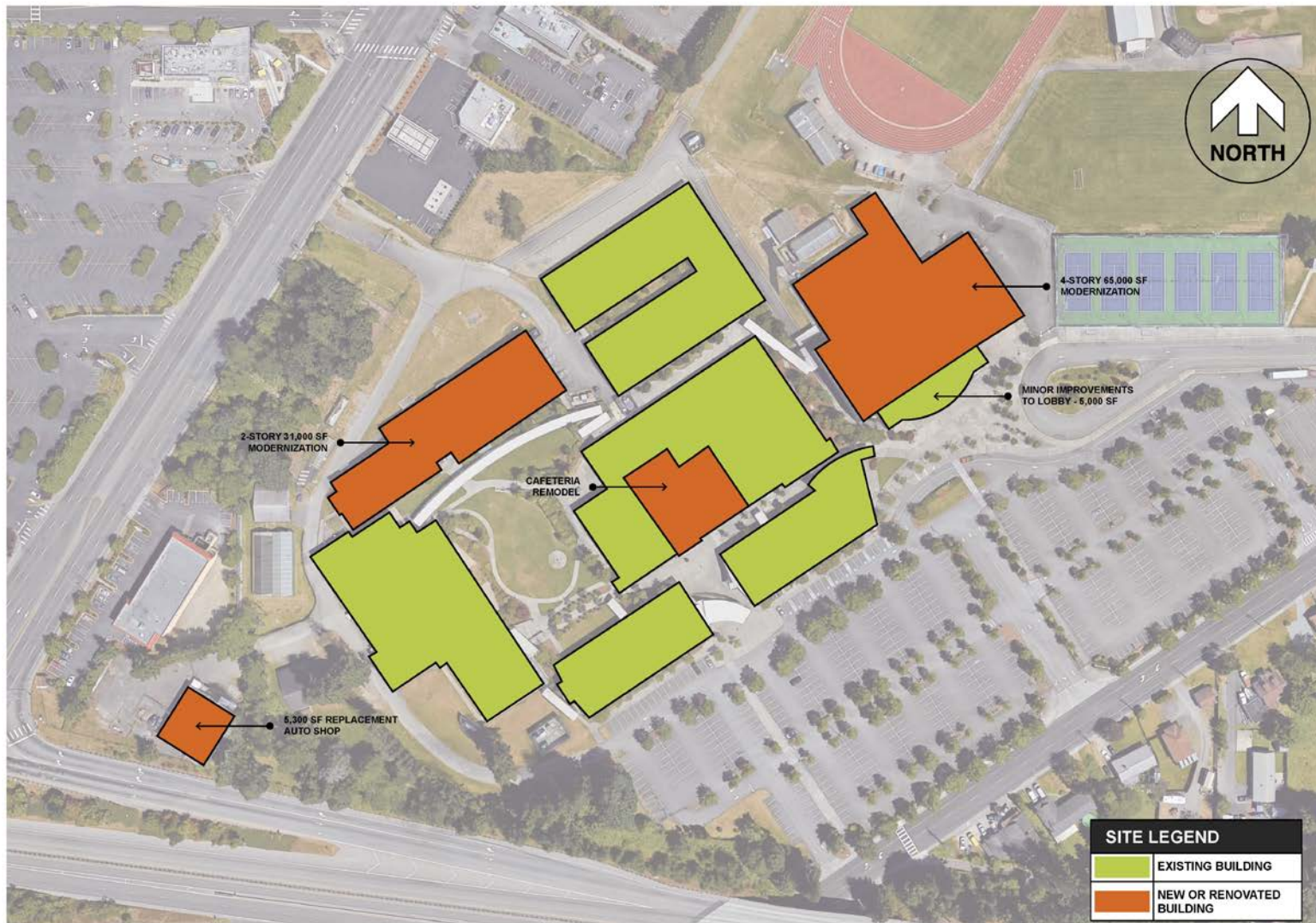
DRAFT
02.10.17

Everett High School
Cafeteria Building
Modernization

Everett Public Schools
2018 Bond Planning

Preliminary Site Plans

CHS Science Building, Cafeteria, Gym and Auto Shop



DYKEMAN

DRAFT
02.10.17

Cascade
High School

Everett Public Schools
2018 Bond Planning

Preliminary Site Plan

Regional Early Learning Center – Adjacent to Jefferson ES Site



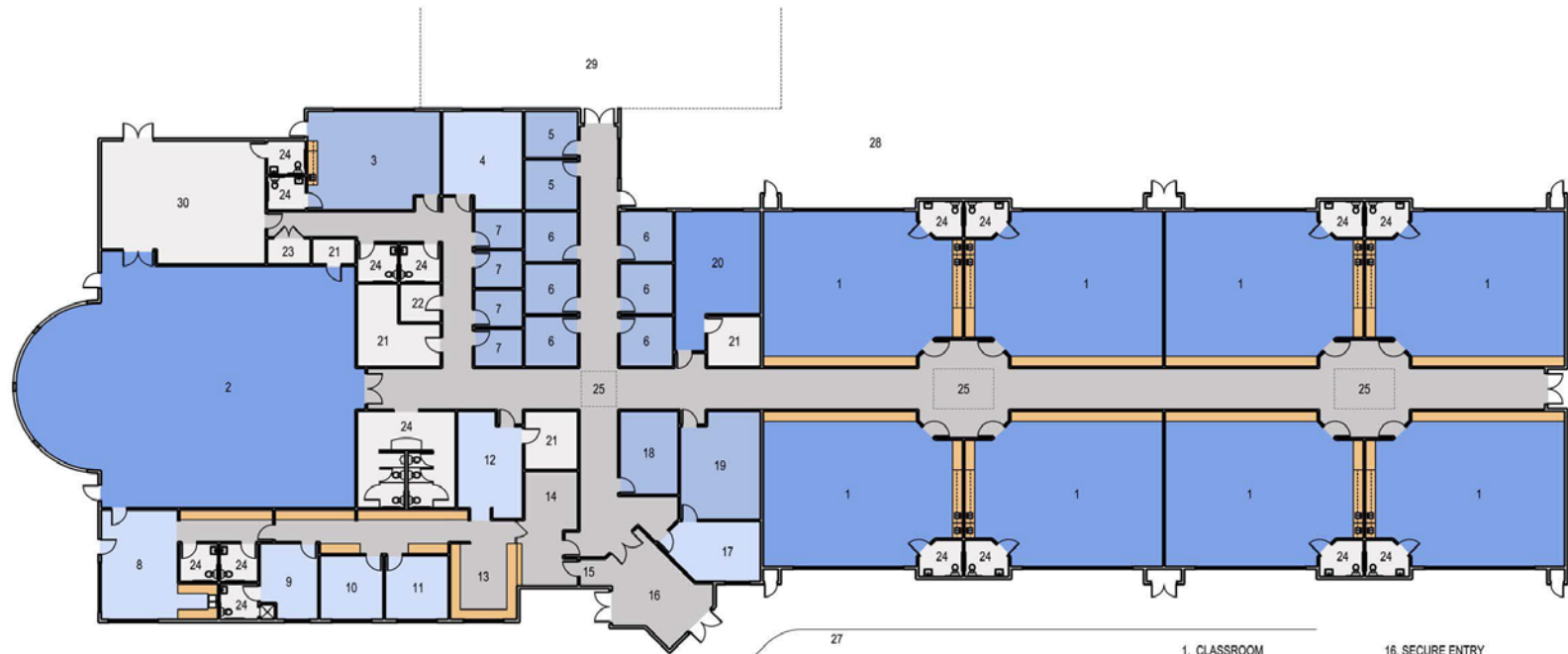
DRAFT
02.10.17

Preliminary Site Plan for
Early Learning Center -
Prototype

Everett Public Schools
2018 Bond Planning

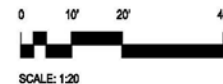
Preliminary Floor Plan

Regional Early Learning Center



EVERETT SCHOOL DISTRICT
EARLY CHILDHOOD LEARNING CENTER - PROTOTYPE

SCHEME "A" - MARCH 18, 2016



- | | |
|---------------------------|-------------------------------|
| 1. CLASSROOM | 16. SECURE ENTRY |
| 2. MULTI-PURPOSE ROOM | 17. PSYCH. OFFICE |
| 3. COMMUNITY ROOM | 18. SMALL CONFERENCE ROOM |
| 4. TEACHER'S WORKSTATIONS | 19. SMALL CLASSROOM |
| 5. SLP OFFICE | 20. OT/PT |
| 6. FAMILY SUPPORT | 21. STORAGE |
| 7. CUBBY | 22. LAUNDRY |
| 8. STAFF LOUNGE | 23. JANITOR |
| 9. NURSE | 24. RESTROOM |
| 10. OFFICE | 25. SKYLIGHT |
| 11. SITE COORDINATOR | 26. BUS DROP OFF/PICK UP |
| 12. TEACHER'S WORKROOM | 27. PARENT DROP OFF/PICK UP |
| 13. RECEPTION | 28. OUTDOOR PLAY AREA |
| 14. WAITING | 29. FUTURE CLASSROOM ADDITION |
| 15. OFFICE ENTRY | 30. KITCHEN |

Preliminary Site Plans

Jefferson ES Parking Expansion and ADA Ramps



DYKEMAN

DRAFT
8.10.15

Jefferson
Elementary School
New Parking / Access

Everett Public Schools
2014 Bond Planning

Summary So Far...



- We are **growing** and **changing**.
- We are **achieving**.
- We are planning for continued **growth** and **classroom needs**.
- We need **your input**





Staff members move to individual tables

Community meets with staff members

- What concerns do you have?
- What are your thoughts or ideas?
- What else should we consider?

Staff members be ready to report out at about 8:00 p.m.



Staff members: What did you hear?

Themes, thoughts, ideas, concerns



Next steps

- Process feedback from tonight's meeting, and other community forums
- Additional engagement and communications - Thought Exchange, telephone town hall, website, etc.
- Continued planning and refinement of cost estimates
- CFAC and TAC advice and feedback – May, 2017
- Board discussion on June 6, 2017
- Community outreach – summer and fall, 2017
- Board decision in November, 2017

Thank you!